



Honey Monster®

Septage Receiving System

Overview

The automated Septage Receiving System is based on proven Auger Monster® technology, which allows cleaner handling of septage truck waste through separation of solids. The unique combination of grinding, solids removal, washing and dewatering can be accomplished in approximately 5 to 15 minutes for a typical septage truck.

An optional 'MonsterTrack' metering and control system is available for monitoring septage flow and providing accurate data usable for billing to septage haulers and the plant. The system is based on a card reader or digital key pad for security, in combination with a flow meter and plug valve.



MonsterTrack

Automated controller, monitoring and tracking with downloadable billing info.



Removal of Solids From Tankered Waste

Features & Benefits

Dual Shafted Grinding

- Maximizes the surface area on solids, which facilitates cleaning

Two Dual-manifold Wash Water Systems

- Ensures optimal throughput
- Washes soft organics off of discharged solids

Advanced Screening and Dewatering

- Auger Monster screen with 6mm perforations removes unwanted solids and trash
- Integrated compaction zone provides significant additional dewatering of the discharged solids

High Level Ultrasonic Sensor

- Regulates flow for optimum performance
- Prevents overflow conditions

Optional 'MonsterTrack' Control System

- Card access allows monitoring of septage flow and provides accurate information usable for billing
- Optional pH and conductivity sensing loop prevent unwanted discharge from being sent into the system



JWC
International®

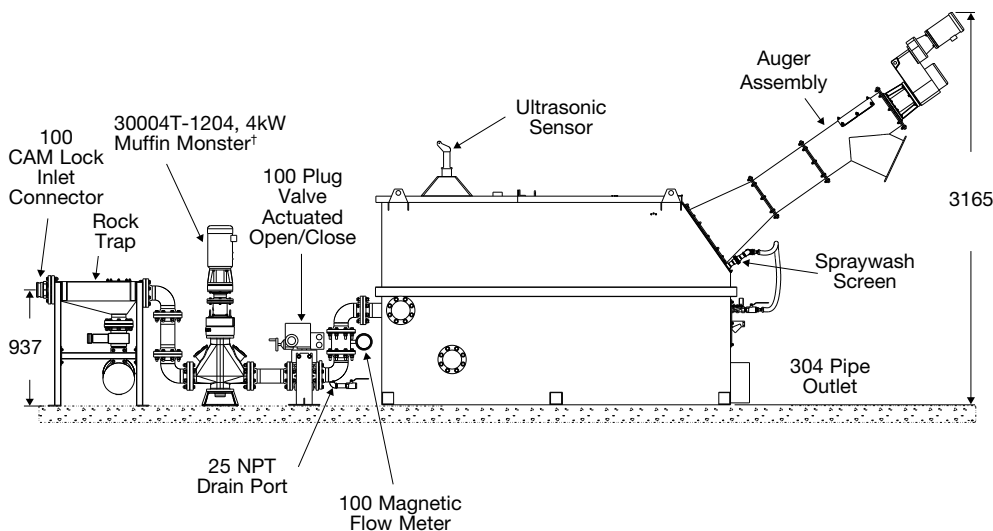
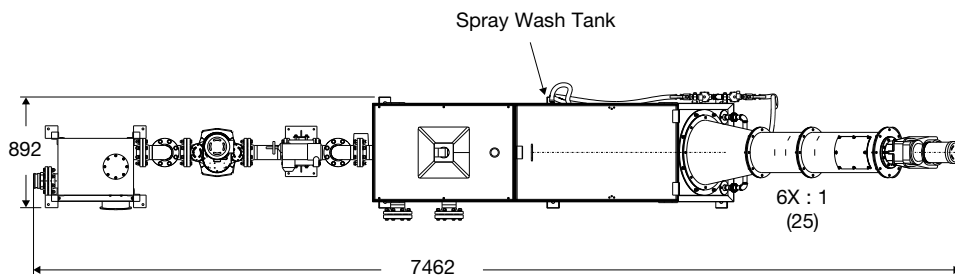
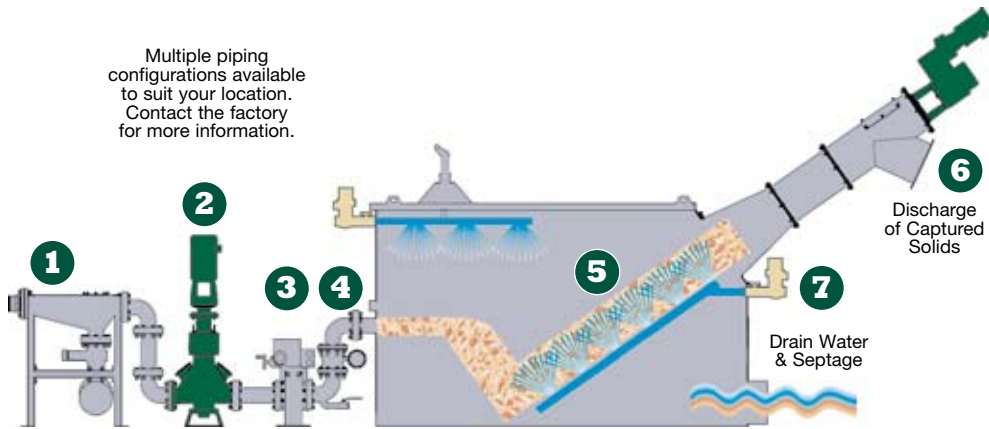
Trust Monster Quality™

www.jwci.co.uk

Honey Monster®

Septage Receiving System

Multiple piping configurations available to suit your location. Contact the factory for more information.



Operation

- 1) Septic waste from hauler is discharged into receiving system via a cam lock inlet (heavy object trap optional).
- 2) Material is processed through the Muffin Monster grinder.
- 3) Ultrasonic level sensor and modulating plug valve regulate flow.
- 4) If the 'MonsterTrack' option is installed, the flow is measured by a magnetic flow meter and the data is sent to the controller to create a record useful for billing purposes.
- 5) The ground septage is transferred to the auger. A spray wash helps wash the septage and wastewater through the perforated screen.
- 6) The unwanted solids are captured by the inclined auger screen and transported to the compaction zone for additional dewatering, then dropped in a bin ready for landfill disposal.
- 7) The screened septage now flows into the wastewater treatment plant.

Materials of Construction

Tank & Piping: 304 stainless steel

Auger System: 304 stainless steel casing with Ø 480mm alloy steel centerless screw

Cutters and Spacers: 4130 heat treated alloy steel, surface ground for uniformity and through hardened to a minimum 45-50 Rockwell "C"

Seal Faces: Tungsten Carbide / Tungsten Carbide

End Housings and Covers: Cast ASTM A536-77 Ductile Iron

Elastomers: Buna-N®

Model	Screen Diameter	Motor	Screenings Capacity	Maximum Flow
SRS3200	480mm	1.5kW	2.55 m ³ /h	Up to 227 m ³ /h*

† 30004T-1204 uses standard 4kW motor. * Flow rated with clean water, site results will vary depending on solids content.



Unit 5, Daneside Business Park
River Dane Road
Congleton, Cheshire CW12 1UN
United Kingdom
Phone: +44 1260 277047
Fax: +44 1260 277557
jwci@jwce.com



www.jwci.co.uk